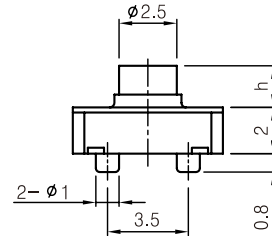
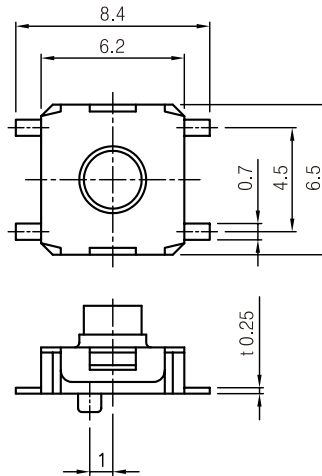
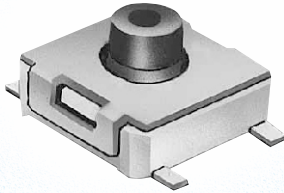


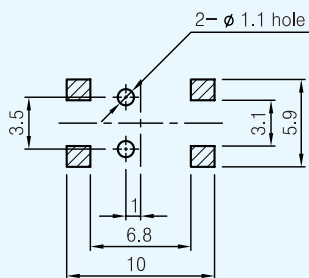
## STD654



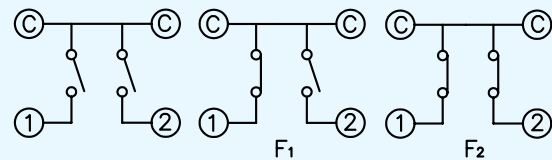
Type	h
557	0
654	1.8
668	1.1

Description	Model	STD557		STD654		STD668	
		557AS	557BS	654AS	654BS	668AS	668BS
<b>Operating Force (gf)</b>		F1 : 100±40 F2 : 300±80	F1 : 60±40 F2 : 150±80	F1 : 100±40 F2 : 300±80	F1 : 60±40 F2 : 150±80	F1 : 100±40 F2 : 300±80	F1 : 60±40 F2 : 150±80
<b>Stem Color</b>		-		Beige	Gray	Beige	Gray
<b>Life Cycle (min)</b>		10,000					
<b>Rating (max)</b>		50mA, 12V DC					
<b>Stroke (mm)</b>		S1 : 0.3±0.1, S2 : 0.55±0.15					
<b>Contact Resistance</b>		200 mΩ max					
<b>Features</b>		Shutter switch, Double action, Reflow soldering					
<b>Packaging</b>	<b>Bulk</b>	1,000 pcs / Bag					
	<b>Reel</b>	2,500 pcs / Reel		1,000 pcs / Reel		1,000 pcs / Reel	

### P.C.B Layout



### Circuit Diagram



### Tape Packaging

