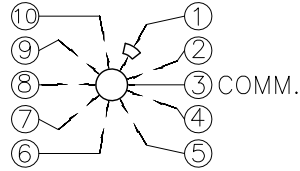
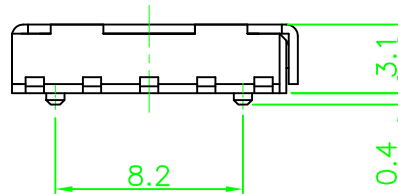
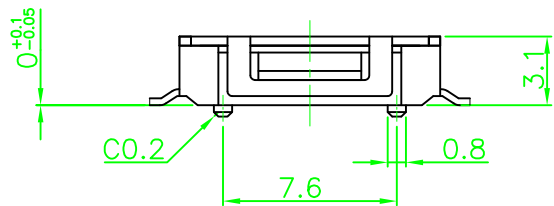
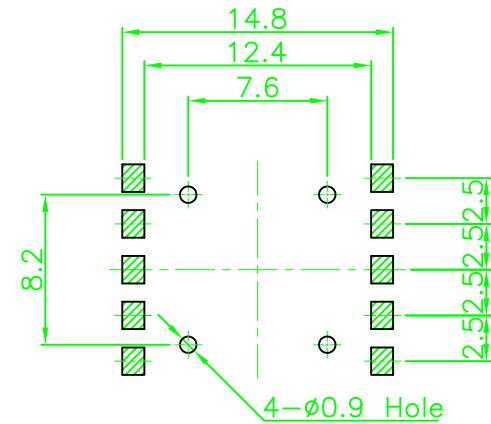


CIRCUIT DIAGRAM




P.C.B LAND PATTERN



SPECIFICATION

1. RATING : 16V DC, 0.1A Max.
2. POLES-THROWS : 1C - 9P
3. STEP ANGLES : 40°
4. TIMING : NON SHORTING
5. ROTATIONAL TORQUE : 60±30gf.cm
6. CONTACT RESISTANCE : 50mΩ Max.
7. LIFE : 10,000 Cycles Min.
8. TOLERANCE : ±0.2

|          |  |       |  |   |  |               |  |               |  |
|----------|--|-------|--|---|--|---------------|--|---------------|--|
|          |  |       |  |   |  |               |  | TS-R-021      |  |
|          |  |       |  |   |  |               |  | RS-V-04       |  |
| PART NO. |  | MODEL |  | MATERIAL  |  | SPECIFICATION |  | TREATMENT     |  |
|          |  |       |  |   |  |               |  | REFERENCE     |  |
|          |  |       |  | TRIGONOMETRY  |  | UNIT          |  | SCALE         |  |
|          |  |       |  |   |  | m/m           |  | USER          |  |
|          |  |       |  | APPROVAL  |  | CHECK         |  | DESIGN        |  |
|          |  |       |  |  |  | M.K. JUNG     |  | TITLE         |  |
| MARK     |  | DATE  |  |   |  | 2005.4.28     |  |               |  |
|          |  | APPR. |  | CHECK   |  | DESIGN        |  | ROTARY SWITCH |  |
|          |  |       |  |   |  |               |  | SRS1910S      |  |
|          |  |       |  |   |  | DWG NO.       |  |               |  |