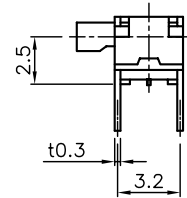
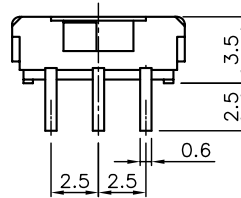
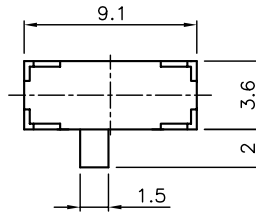
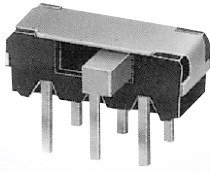
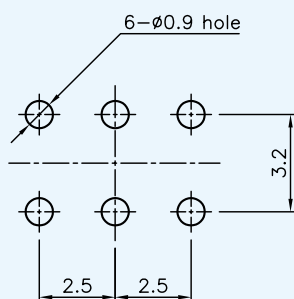


PSS220



Description		Model	PSS220F2
Operating Force (gf)			250 ± 150
Poles – Throws			2C - 2P
Life Cycle (min)			10,000
Rating (max)			0.1A, 15V DC
Stroke (mm)			2
Contact Resistance			70 mΩ max
Timing			Non shorting
Packaging	Bulk		1,000 pcs / Bag

P.C.B Layout



Circuit Diagram

