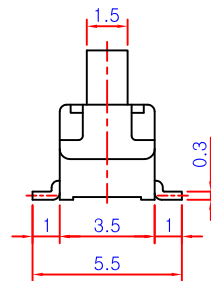
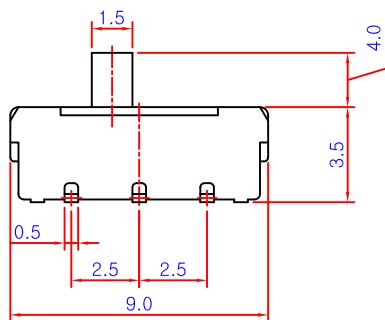
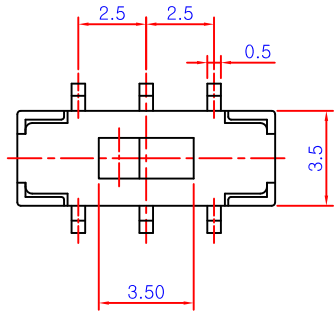
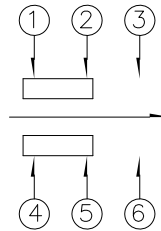
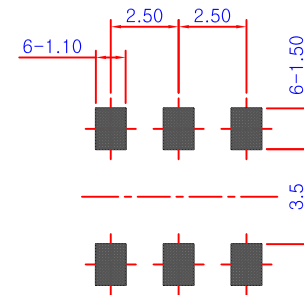


CIRCUIT DIAGRAM



P.C.B MOUNTIN HOLE



SPECIFICATION

1. RATING : 15V DC, 0.1A Max.
2. CONTACT RESISTANCE : 70mΩ Max.
3. CIRCUIT : 2C - 2P
4. STROKE : 2mm
5. TIMING : NON SHORTING
6. OPERATION FORCE : 250±150gf
7. TOLERANCE : ±0.2

											SS-S-003
PART NO.		MODEL			MATERIAL		SPECIFICATION		TREATMENT		REFERENCE
					TRIGONO	UNIT	SCALE	USER		SLIDE SWITCH	
					-METRY	m/m					
					APPROVAL	CHECK	DESIGN	TITLE		SST235F4	
							M.K. JUNG				
MARK	DATE	APPR.	CHECK	DESIGN					2005. 4. 30	DWG NO.	