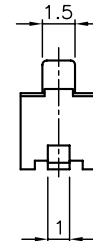
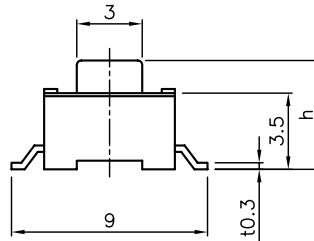
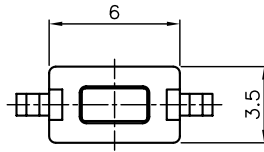
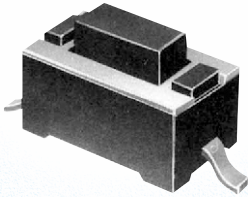


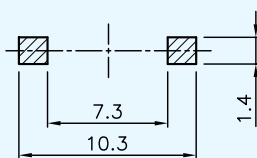
## STM141



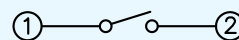
Type	h
N	4.3
A	5

Description	Model	STM141NN	STM141JN	STM141SN	STM141HN
<b>Operating Force (gf)</b>		130±30	160±30	200±50	260±50
<b>Stem Color</b>		Black	Blue	Gray	Red
<b>Life Cycle (min)</b>		50,000	50,000	30,000	30,000
<b>Rating (max)</b>		50mA, 12V DC			
<b>Stroke (mm)</b>		0,25±0,1			
<b>Contact Resistance</b>		100 mΩ max			
<b>Features</b>		Economical SMD, Reflow Soldering			
<b>Packaging</b>	<b>Bulk</b>	1,000 pcs / Bag			
	<b>Reel</b>	1,700 pcs / Reel			

### P.C.B Layout



### Circuit Diagram



### Tape Packaging

