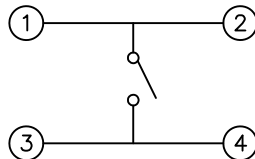
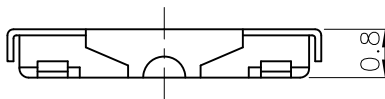
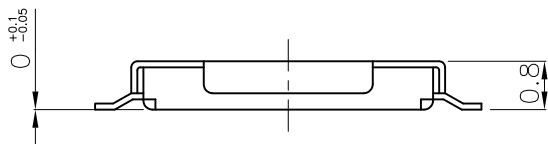
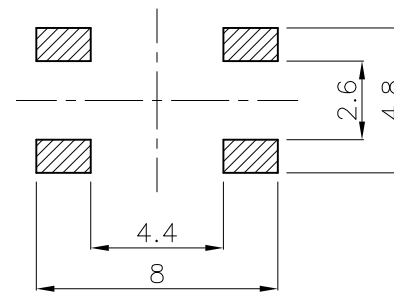


CIRCUIT DIAGRAM



P.C.B LAND PATTERN



SPECIFICATION

1. RATING : 12V DC, 50mA Max.
2. STROKE : 0.25±0.1
3. CONTACT RESISTANCE : 100mΩ Max.
4. OPERATING FORCE : 260±50gf.
5. BOUNCE : 10msec Max.
6. LIFE : 100,000 Cycles Min.
7. TOLERANCE : ±0.2
8. CHARACTERISTICS : DUST&MOISTURE PROOF

									TS-V-016-1	
									TS-R-006	
PART NO.		MODEL		MATERIAL		SPECIFICATION		TREATMENT		REFERENCE
					TRIGONOMETRY	UNIT	SCALE	USER		TACT SWITCH
						m/m				
					APPROVAL	CHECK	DESIGN	TITLE		STM153HS
							J.W.CH01	DWG NO.		
MARK	DATE	APPR.	CHECK	DESIGN			2005.10.11			