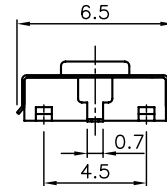
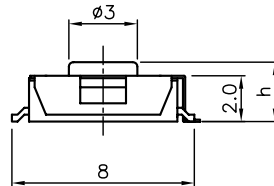
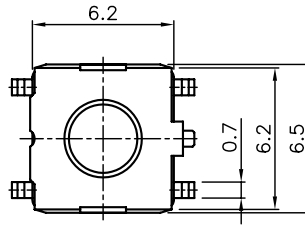
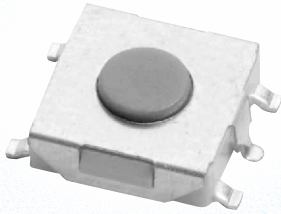


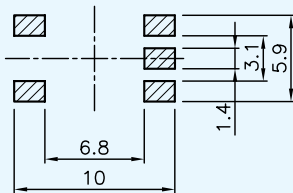
## STM255



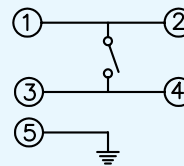
Type	h
W	2.5
X	3.1

Description	Model	STM255NW	STM255JW-K	STM255JW	STM255SW	STM255HW
<b>Operating Force (gf)</b>		130±30	160±30	160±30	200±50	260±50
<b>Stem Color</b>		Black	Bule / Gray	Blue	Gray	Red
<b>Life Cycle (min)</b>		300,000	1,000,000	150,000	100,000	100,000
<b>Rating (max)</b>		50mA, 12V DC				
<b>Stroke (mm)</b>		0.25±0.1				
<b>Contact Resistance</b>		100 mΩ max				
<b>Features</b>		Long life, Ground, Reflow soldering, Low profile				
<b>Packaging</b>	<b>Bulk</b>	1,000 pcs / Bag				
	<b>Reel</b>	2,000 pcs / Reel				

### P.C.B Layout



### Circuit Diagram



### Tape Packaging

