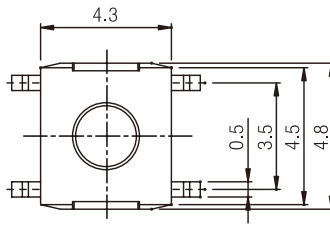
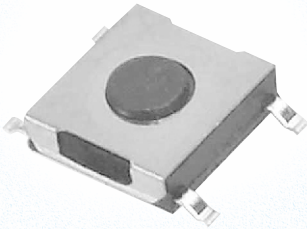
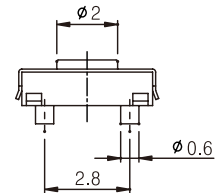
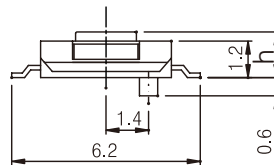


STM260

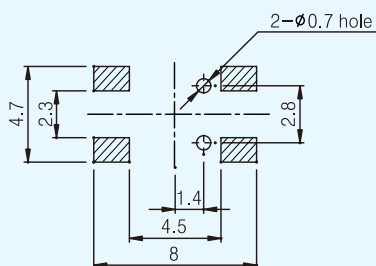


Type	h
S	1.5
A	4.3

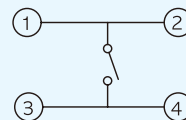


Description		Model	STM260JS	STM260HS
Operating Force (gf)			160±30	260±50
Stem Color			Blue	Red
Life Cycle (min)			300,000	100,000
Rating (max)			50mA, 12V DC	
Stroke (mm)			0.25±0.1	
Contact Resistance			100 mΩ max	
Features			Low profile, Thin type, Reflow soldering	
Packaging	Bulk		1,000 pcs / Bag	
	Reel		3,500 pcs / Reel	

P.C.B Layout



Circuit Diagram



Tape Packaging

