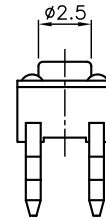
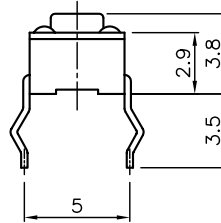
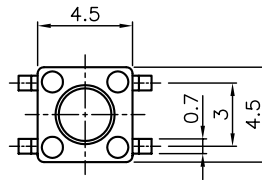
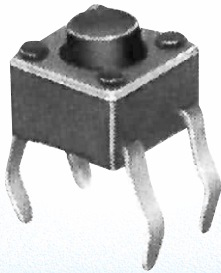
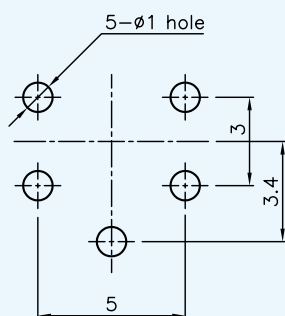


PTM112



Description		Model	PTM112NS	PTM113NS
Operating Force (gf)			130±30	
Stem Color			Black	
Life Cycle (min)			50,000	
Rating (max)			50mA, 12V DC	
Stroke (mm)			0.25±0.1	
Contact Resistance			100 mΩ max	
Ground Terminal			Without	With
Features			Miniature type, Economical design, Ground terminal(PTM113)	
Packaging	Bulk		1,000 pcs / Bag	

P.C.B Layout



Circuit Diagram

