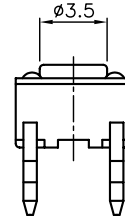
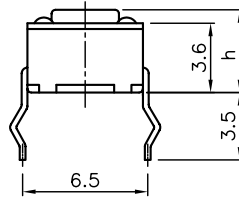
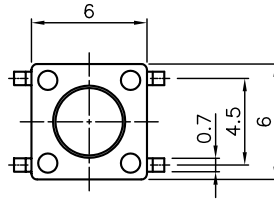


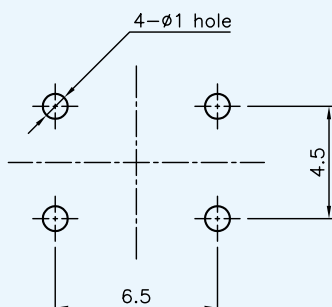
PTM114



Type	h	Stem
N	4.3	
A	5	
B	7	
C	9.5	
D	17	
T	7.3	

Description	Model	PTM114NN	PTM114JN	PTM114SN	PTM114HN
Operating Force (gf)		130±30	160±30	200±50	260±50
Stem Color		Black	Blue	Gray	Red
Life Cycle (min)		300,000	150,000	100,000	100,000
Rating (max)		50mA, 12V DC			
Stroke (mm)		0.25±0.1			
Contact Resistance		100 mΩ max			
Features		Economical design			
Packaging	Bulk	1,000 pcs / Bag			

P.C.B Layout



Circuit Diagram

